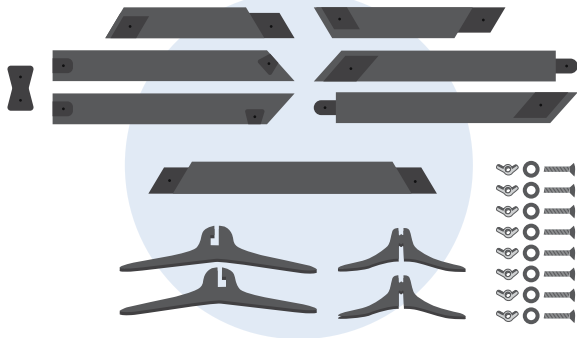


# Wood Diamond Arch Assembly Instructions

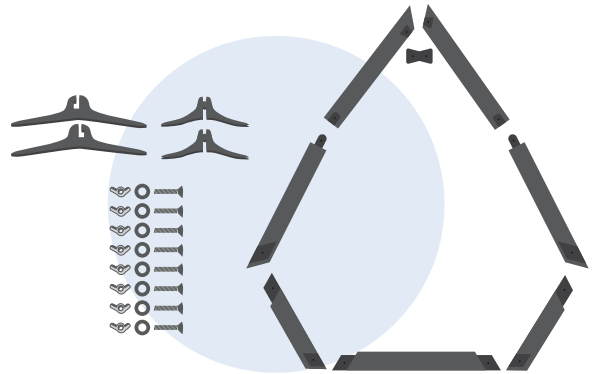
1

Remove the arch out of the box and lay out details as the graphic to make sure you have all the parts. See image for quantities. 8 wood pieces, 8 bolts, 8 washers, 8 wingnuts, 4 base stands (2 large, 2 medium)



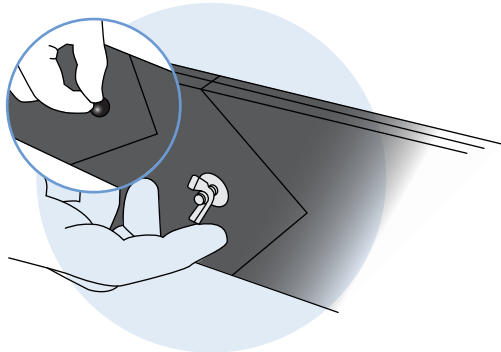
2

Lay out the parts by overlapping pockets with the wood pieces giving them the final shape of the arch



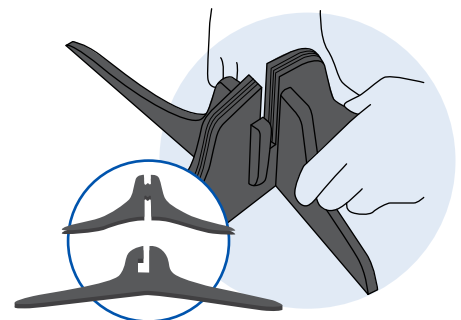
3

Connect with bolt and screw. (Front and Back Screw)



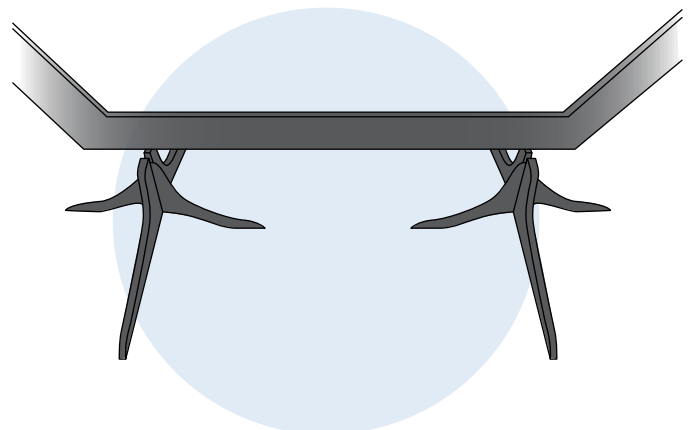
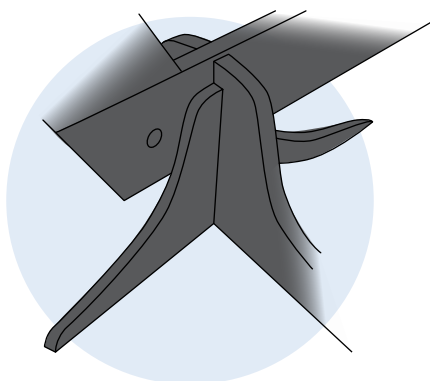
4

Connect the leg stand inserts smaller and larger shifting towards the back slot locking in the pieces.



5

Place the leg stands side by side and install the arch in slots. This requires 2 people and 10 minutes of work.





SPECIAL WALNUT



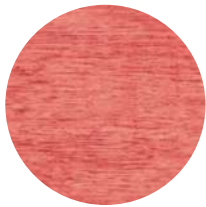
BLACK



ANTIQUE WHITE



WHITE PINK



BARN RED



BLACK CHERRY



RED OAK



ESPRESSO



SUNBLEACHED



WORN NAVY



CARBON GREY



EBONY



AGED BARREL



VINTAGE AQUA



WHITE BABY BLUE



WEATHER GREY

*\*We cannot guarantee stain colors. They can vary depending on monitor screen*