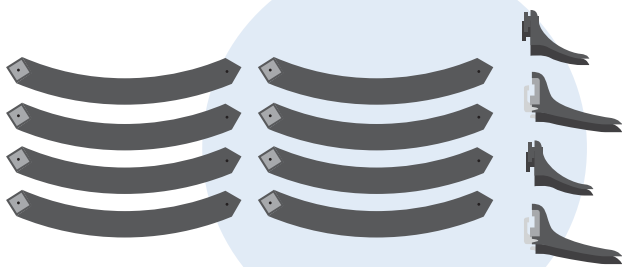


# High Quality Wood Frame Instructions

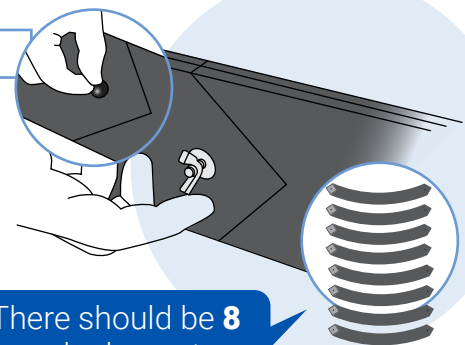
1

Get the arch out of the box and lay out the details as in the graphic, where the side with a square cutout is the front. **WARNING!** Should appear a trapezoidal shape.



2

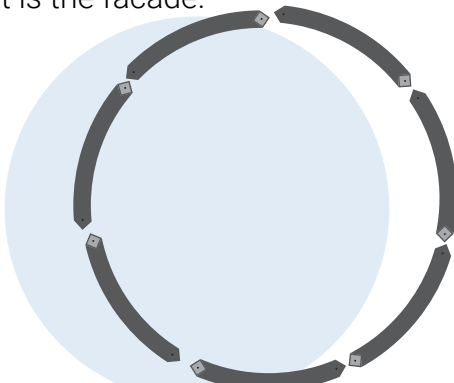
Use a bolt and screw to connect the parts together (Front view, back view)



There should be 8 such elements

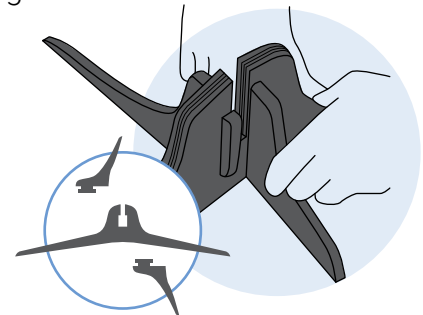
3

Lay out the parts, giving them the final shape of the Arch and connect with a bolt and screw. **WARNING!** The square cut is the facade.



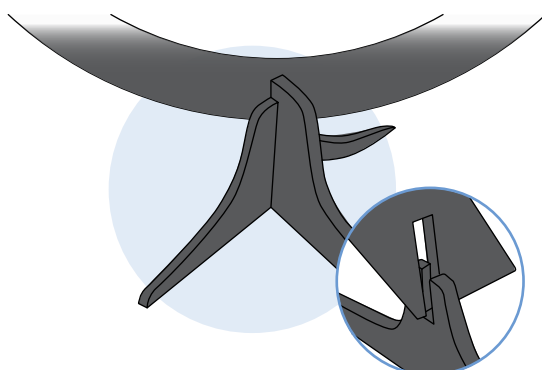
4

Connect the two large parts of the stand together groove to groove. Insert small parts of the stand on both sides of the groove into the groove and connect.



5

Place the stands in front of each other and place the Arch on the stands.



6

Instaling requires 2 people and 10 minutes of work

